



INSTITUTIONAL EQUIPMENT, INC.

◆ Foodservice ◆ Architectural ◆ Fabrication ◆ Installation

CASHIER COUNTERS

Job Name: _____

Item No.: _____

CASHIER COUNTERS



- ◆ Cashier counters built to specification [Professional installation available]
- ◆ Available Top materials: Stone, Solid Surface, Laminate, Stainless Steel
- ◆ Custom front panels or doors: Laminate, Veneer, Stainless Steel, Tile, Inlays
- ◆ Locking Cash Drawer and cabinets available
- ◆ Counter mounted equipment, drop-ins, and inserts, fitted and installed
- ◆ Electrical connections pre-wired to connection boxes, receptacles.
- ◆ Conduit and boxes provided for data cabling when required



Institutional Equipment, Inc. is a custom steel fabricator and equipment installer located in the Chicagoland area. Products include a full range of custom foodservice equipment, architectural elements crafted to specification, and custom stainless steel tables, countertops, and cabinetry. We are a versatile manufacturer specializing in quick turn production, designed to specification, offering professional, licensed, bonded installation.

Institutional Equipment, Inc. 704 Veterans Parkway Unit B Bolingbrook, IL 60440
Phone 630-771-0990 Fax 630-771-0994 www.ieiusa.net



INSTITUTIONAL EQUIPMENT, INC.

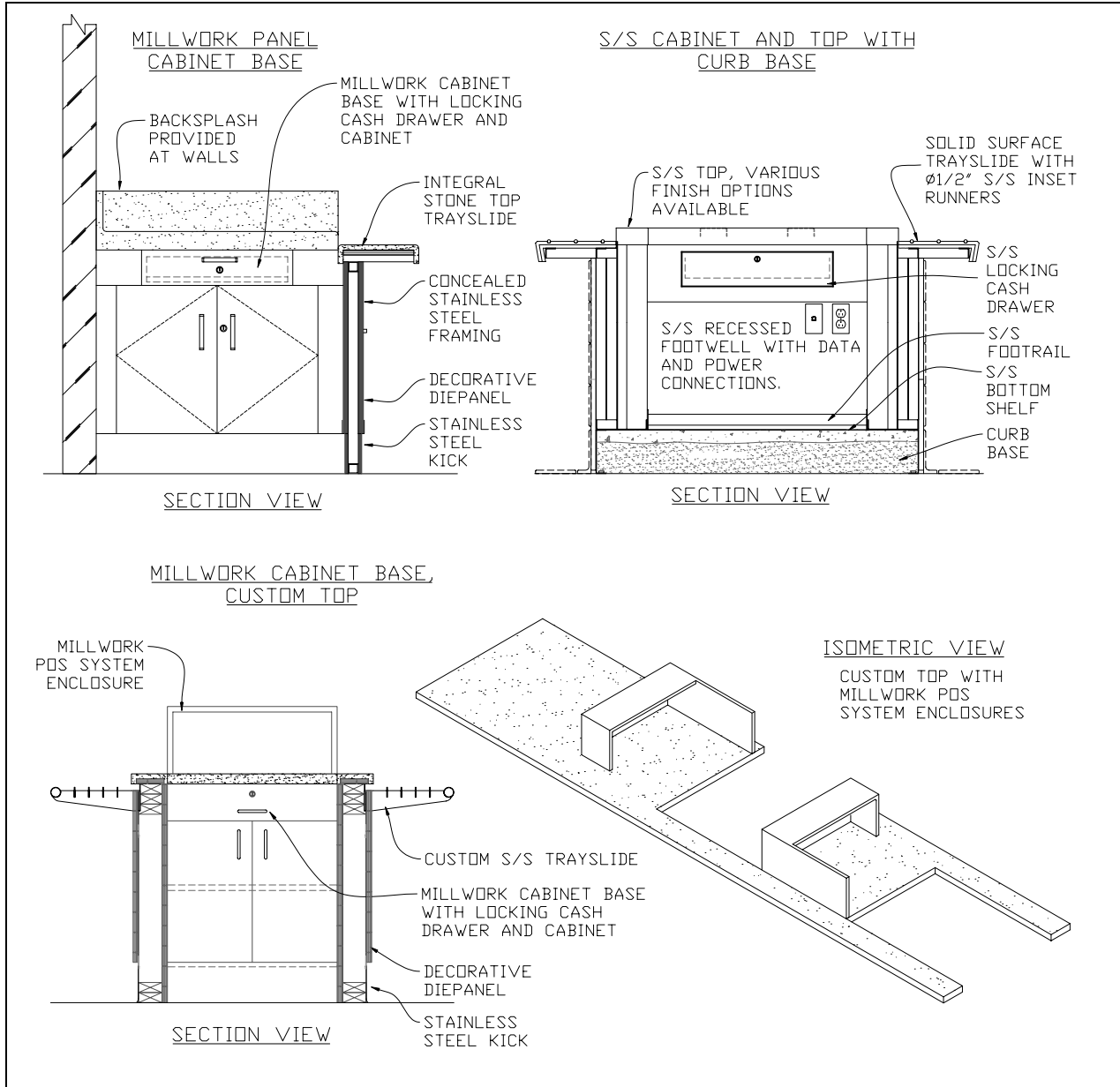
◆ Foodservice ◆ Architectural ◆ Fabrication ◆ Installation

CASHIER COUNTERS

Job Name: _____

Item No.: _____

SAMPLE SECTION VIEWS



Cash counters are constructed to match the specified design and construction for each project. The drawings shown above illustrate examples of typical applications.

If requested, IEI will design counters specific to your application. A full range of materials is available. Please contact us for additional information.